

**Report of: Jane Maxwell, East North East Area Leader**

**Report to: Outer North East Community Committee – Alwoodley, Harewood and Wetherby Wards**

**Report author: Andrew Birkbeck, Area Improvement Manager, Tel: 0113 3367642**

**Date: 11<sup>th</sup> December 2017**

**To Note**

## **Community Committee Update Report**

---

### **Purpose of report**

1. This report provides an update on the on-going work programme of Outer North East Community Committee.

### **Main issues**

2. Tasking meetings for both Alwoodley and Harewood & Wetherby Wards have taken place in both September and November 2017.
3. Tasking meetings are an opportunity for the Police, Ward Members, council officers and partner agencies to discuss and co-create actions to address emerging and on-going crime and environmental issues in the local area.
4. For all the latest information and developments regarding community safety matters in the Outer North East area please visit:  
<https://www.facebook.com/WYPLeedsOuterNorthEast/?fref=ts>
5. The Outer North East Environment Sub Group met on 23<sup>rd</sup> November 2017. The sub group is chaired by Cllr Gerald Wilkinson, the Outer North East Community Champion for Environmental Services.
6. Ward Members, officers from the Communities Team, Housing Leeds, East North East Locality Team, Parks and Countryside and Waste Management Services were all in attendance.

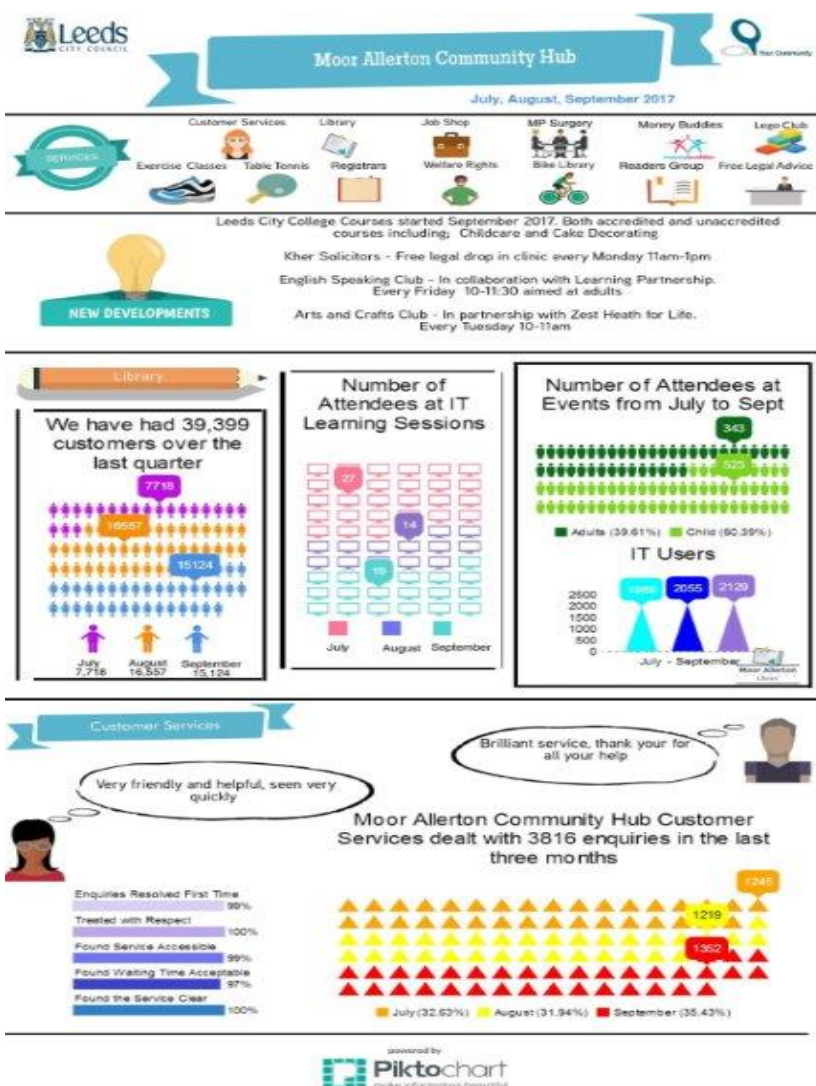
7. The minutes of the Outer North East Environment Sub Group meeting held on the 7<sup>th</sup> September 2017 are attached at **Appendix A**. Minutes of the November meeting will be presented to a future meeting of the Community Committee.
8. A series of Ward Member meetings have been held since the last meeting of the Community Committee.
9. Alwoodley Ward Members will meet on 11<sup>th</sup> December 2017. Local issues to be discussed include highways maintenance, grit bins, greenspace, the environment and Wellbeing finance.
10. Harewood Ward Members meetings were held on both the 13<sup>th</sup> September 2017 and 30<sup>th</sup> November 2017. As well as Wellbeing finance, subjects for discussion included traffic management issues, council housing and mobile library provision in the Harewood Ward.
11. Wetherby Ward Members met on 13<sup>th</sup> October 2017. Items discussed included community hubs, mobile library provision, greenspace, highways improvements and Wellbeing finance.
12. An Emmerdale Stakeholder Panel meeting was held on 7<sup>th</sup> September 2017. This panel considered six projects that had been put forward by eligible groups and organisations since the last meeting in July. The panel made the following decisions:

<b>Name of project</b>	<b>Applicant</b>	<b>Amount applied for (£)</b>	<b>Panel decision (including amount awarded)</b>
Bridleway Enhancement at Wayside Mount	Residents of Wayside Mount, Bardsey	£16,600 + VAT	This application was not supported by the panel as it was not seen to be of sufficient public benefit. Cllr R Procter abstained from voting on this item.
Repairs project of Grade 2 listed building	St Oswalds Church, Collingham	£26,000	Site visit conducted by Stephen Bolton and Kate Hill. As a result the panel agreed to support a £10,000 contribution in the form of a grant.
Ginnel improvements as well as improvement	East Keswick Parish	£40,000	The panel agreed a £6,300 contribution

works to section of Ebor Way (520m)	Council		towards the ginnel works. Roger Brooks (LCC, PROW officer) to come to a future meeting to discuss the Ebor Way element.
Bingley Ginnel Restoration	Bardsey Parish Council	£11,160	Applicants to be signed posted to 'heritage volunteers' and the panel to re-consider if application is reduced.
Shadwell Library Restoration – Ceiling Repair Works	Shadwell Independent Library	£5,580	The panel supported this application in full - £5,580. The panel also wanted to re-iterate that this the last application they would receive from the library.
Cottage in the Wall enabling works	Harewood Estate	£50,000 (approx.) + VAT	Panel agreed to support the enabling works to allow a survey to take place.  £50,000 (approx.) + VAT but more detail needed on exact price.  Harewood Estate to submit invoice and also send survey report to Phil Ward, Conservation Officer at LCC.

13. The purpose of the panel is to help steer and allocate the S106 funding stream that has arisen to help mitigate any impact that the Emmerdale film set may have. The Chair, Cllr Rachel Procter, has resolved to utilise this funding stream to its full potential over the coming years to best benefit not only the Harewood estate and its environs, but also the wider Harewood Ward.

14. Transport and highways issues have been at the forefront of Elected Members agendas in both October and November. On the 19<sup>th</sup> October, a meeting of the Wetherby Transport Group took place in Walton. This grouping is made up of representatives of the area's Town and Parish Council's, Ward Members and local volunteers. The focus of the transport group is to investigate solutions to long-standing transport issues in the Wetherby Ward.
15. On 2<sup>nd</sup> November there was a Boston Spa highways consultative forum held at Boston Spa Village Hall. Attended by the local parish council, Wetherby Ward Members and representatives from both Leeds City Council's Highways Services and Communities Teams', the meeting discussed a range of options for allocating S106 monies arising from a local development.
16. A meeting held on the afternoon of the 14<sup>th</sup> November saw Harewood Ward Members, representatives from local Parish Councils and officers from Highways Services come to together to discuss highway maintenance concerns in the Harewood Ward.
17. Work at the Moor Allerton Hub is continuing to flourish. The infographic below highlights some of activity that has taken place there during the busy Summer period (July, August and September 2017).



## **Moor Allerton Partnership (MAP)**

18. Since the last meeting of the partnership in December 2015, the local landscape has changed and a number of new partners and community groups have emerged. In summer 2017, a piece of work was carried out by Preet Matharu from the council's Communities Team to meet with local groups and partners to ascertain what they considered to be the current issues facing the area. This collective then came together on 1st August 2017, to have the first MAP meeting in almost two years
19. Notable changes have taken place in the Moor Allerton area in the last 18 months, supported and funded by Alwoodley Ward Members. The Lingfield Living Local centre has been renovated and opened up the community hub. The aim of the hub is to provide provision for the residents of the Lingfield estate. Across the road from the hub is the Lingfield Centre. Moor Allerton Library has also relaunched as a community hub, which provides a number of council services under one roof. The community hub manager has worked with staff, the Communities Team and other providers to put on extra provision, such as exercise classes for the community.
20. The local residents group, Cranmer Call has a number of activities taking place from the Moortown Methodist church. Other partners that form part of the Moor Allerton Partnership are MaeCare, Community Links, Zest – Health for Life, West Yorkshire Police, foodbanks, Housing Leeds and Moortown Baptist Church.
21. At the time of writing the Outer North East Facebook page has 180 Likes. Since the September Community Committee, the Communities Team have posted over 38 items that have had a reach of over 8,140 (although it should be noted that this will include a high proportion of re-visits to site from the same people). To date, this three month period has resulted in the largest collective reach the Outer North East Facebook page has ever had, doubling all previous efforts.
22. Since the last meeting in September, members of the Communities Team (ENE) have been managing and populating the Facebook page that has been established for the Outer North East Community Committee as a means for communicating with partners, 3<sup>rd</sup> sector organisations and local residents.
23. Posts on both Twitter and Facebook are on a variety of subjects relevant to the Outer North East area including job opportunities, funding support, open days, local service provision, consultations and sporting activities. For more details visit:
  - Link to the Facebook Page for the Inner East Community Committee: <https://www.facebook.com/LCCOuterNE>
  - Link to the Your Community Twitter Page: [https://twitter.com/@\\_YourCommunity](https://twitter.com/@_YourCommunity)
24. An example of the potential of social media as a means for engagement is highlighted overleaf. This particular post from the 2<sup>nd</sup> October 2017 reached 588 people.

Leeds City Council Outer North East Community Committee

Andy



**English Speaking Club**  
Enrolment: 21 September 2017  
Every Thursday  
10.00am – 11.30am  
Moor Allerton Library  
Moor Allerton Community Hub

Are you learning or improving your spoken English? Come and practice with us!  
Meet new people and improve your everyday conversation in a friendly and relaxed environment.  
Free sessions.

In collaboration with Learning Partnership.

Talk English

learningpartnerships

For more information call 0113 247 6016  
or visit [www.leeds.gov.uk/libraries](http://www.leeds.gov.uk/libraries)  
leedslibraries leedslibraries

Leeds Library and Information Service  
The world at your fingertips

588 people reached

Boost Post

## Conclusion

25. There are a number of actions on-going to achieve the Community Committee priorities and fulfil its work programme but despite this, the Community Committee recognises that there is still a significant amount of work to be done.

## Recommendations

26. That Members note the contents of the report and make comment where appropriate.